

If you are having trouble viewing this email please click [here](#)

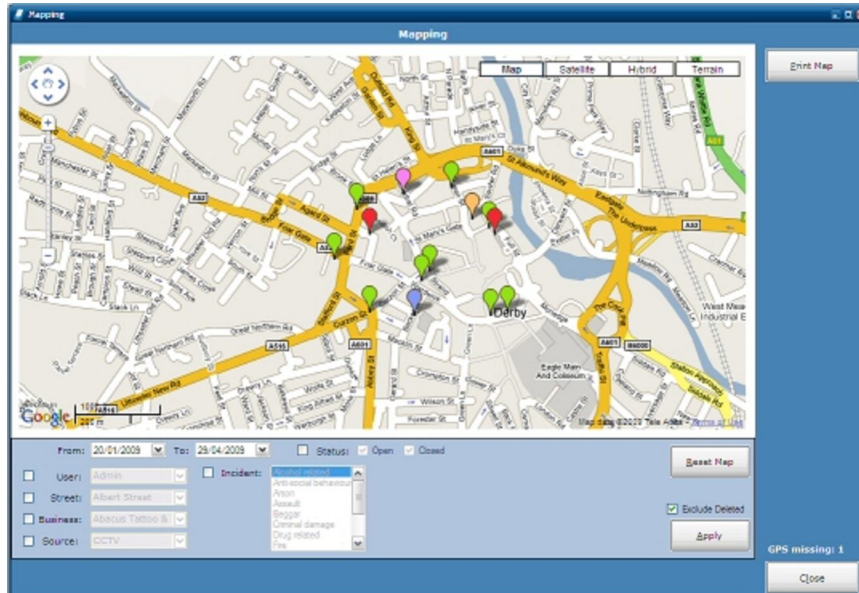


MobileRanger now available with GPS

Come and see us on **stand 6** at the **ATCM Summer School** where we will be unveiling the latest development of our acclaimed MobileRanger system.

The exciting new GPS option turns the MobileRanger PDA in to an even more powerful tool to help community rangers manage their territory, respond to incidents, and add detailed location based statistical information to reports. GPS offers exceptional benefits as:

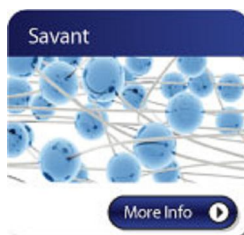
- 'Geo-tagging' of reports will highlight incident "hot spots"
- Ranger locations can be planned to deal with incident clusters
- Accurate location data can be passed to partner services



Major town and city centre BID programmes including; Liverpool, Rugby, Bedford, Ipswich and Swindon, are already benefiting from the increased efficiency MobileRanger can provide.

If you'd like to book an appointment time for a demonstration of MobileRanger on the stand, contact Glyn Jones on 01524 784400.

We look forward to seeing you in Belfast.



© 1998 - 2008 Savant
If you wish to unsubscribe from our newsletter please [click here](#).

